

WELCOME

LANL Foundation Grantees 2021 Evaluation Institute

UNM Evaluation Lab Team

January 7, 2021



Zoom hacks

- Please rename yourself, adding your organization
- If you have a question, please type “Q” into the chat
 - We will call on you after each section
 - Please keep chat otherwise clear so we can keep track of questions
- Try speaker view – it makes Zoom less distracting

For help using Zoom

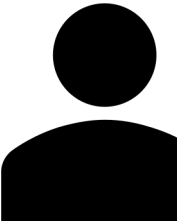


Mary Lopez

Logistics

Have a question for the presenter?
Type "Q" in the chat.

Have Zoom questions?
Send a private chat to Mary Lopez

A black silhouette of a person's head and shoulders, representing a user in a chat or video call.

Welcome Organizations

Audubon New Mexico

Bridges Project for Education

College and Career Plaza

Communities in Schools of New Mexico

Computer Science Alliance

Las Cumbres Community Services

Los Alamos Public Schools

Moving Arts Espanola

NM MESA

Northern Youth Project

Pajarito Environmental Education Center

Rocky Mountain Youth Corps

STEM Santa Fe

STEMarts Lab

United Way of Central New Mexico

Facilitators



Audrey
Team Lead



Charla
Institute Director



Claudia
Director



Melissa
Associate Director



Sonia
Team Lead

Thank you, LANL Foundation!



**LANL
FOUNDATION**
*Investing in Learning
& Human Potential*

2021 Evaluation Institute

Learning-by-doing

- Build an evaluation
- Do the work in the Institute
- Team building

Small groups

- One-on-one feedback from Evaluation Lab facilitator
- Relationship building
- Peer learning

Resources

Materials

<http://evallab.unm.edu/learning-center/summer-institute-materials1/evaluation-institute-2021.html>

Survey questions upfront

- Level: Too advanced, too basic, just right
- Amount of material: too much, too little, just right
- What worked?
- What should we do different next time?



<https://www.surveymonkey.com/r/7S963KW>

The Institute (January – October)

Regular Sessions, 1st Thursdays 12:30 – 5:00 pm

January 7	Principles of evaluation, Logic models
February 4	Logic model and evaluation questions
March 4	Measuring what matters, including the seemingly intangible
April 1	Data collection
May 6	Focus groups and coding qualitative data
June 3	Power, equity and evaluation
July 1	Working with community data
August 4	Data visualization & Excel
September 2	Your evaluation plan + review
October 7	Presentations/graduation

ECHO Learning Communities, 3rd Tuesdays, 9:00-10:30 am

January 26	Theories of Change
February 16	The Evidence Base
March 16	Surveys
April 20	Interviews
May 18	Interactive Focus Groups
June 22	Community-Based Participatory Evaluation*
July 20	TBD
August 17	TBD
September 21	TBD
October 19	TBD

*Tentative.

Evaluation Lab ECHO Online Learning Community

3rd Tuesdays, 9-10:30am



*Everybody
learning,
everybody
teaching*

- You are all on the listserv
- Organizations share evaluation work in progress, get peer feedback
- Didactics on a variety of evaluation topics
- Sessions are recorded

<http://evallab.unm.edu/learning-center/evaluation-lab-project-echo-learning-community-.html>

Jan 7 – Intro to Evaluation / Logic models

12:30-12:45pm Introduction: today's work, logistics (all)

12:45-1:00pm Getting acquainted: small groups & facilitators (groups)

1:00-1:15pm Evaluation principles, mission time (all)

1:15-1:25pm BREAK

1:25-1:55pm Logic models overview (all)

1:55-2:20pm Define outcomes (on your own)

2:20-2:30pm BREAK

2:30-3:00pm Share work (groups)

3:00-3:20pm Debrief outcomes (all)

3:20-3:30pm BREAK

3:30-4:10pm Define resources and activities (on your own)

4:10-4:50pm Share work (small groups with facilitator)

4:50pm Close

Blue = plenary

Purple = small groups

Green = take a break

Orange = work on your own

12:45-1:00pm

Getting acquainted: small groups & facilitators (groups)

Icebreaker:

What is the first thing you will do when there are no more Covid-19 restrictions?

Jan 7 – Intro to Evaluation / Logic models

12:30-12:45pm Introduction: today's work, logistics (all)

12:45-1:00pm Getting acquainted: small groups & facilitators (groups)

1:00-1:15pm Evaluation principles, mission time (all)

1:15-1:25pm BREAK

1:25-1:55pm Logic models overview (all)

1:55-2:20pm Define outcomes (on your own)

2:20-2:30pm BREAK

2:30-3:00pm Share work (groups)

3:00-3:20pm Debrief outcomes (all)

3:20-3:30pm BREAK

3:30-4:10pm Define resources and activities (on your own)

4:10-4:50pm Share work (small groups with facilitator)

4:50pm Close

Blue = plenary

Purple = small groups

Green = take a break

Orange = work on your own

1:00-1:15pm

Evaluation principles and mission time



UNM Evaluation Lab

building evaluation capacity that is rooted in the needs of New Mexico's.

- Evaluation Lab Fellowship: student training in partnership with community organizations
- Direct training and support for community organizations.



Evaluation Lab Team



Audrey Cooper
Team Lead



Charla Orozco
Institute Director



Claudia Díaz Fuentes
Director



Mary Lopez
MPP Grad Student



Melissa Binder
Associate Director

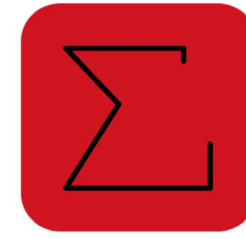


Sonia Bettez
Team Lead

Evaluation Lab principles



Measuring
What Matters

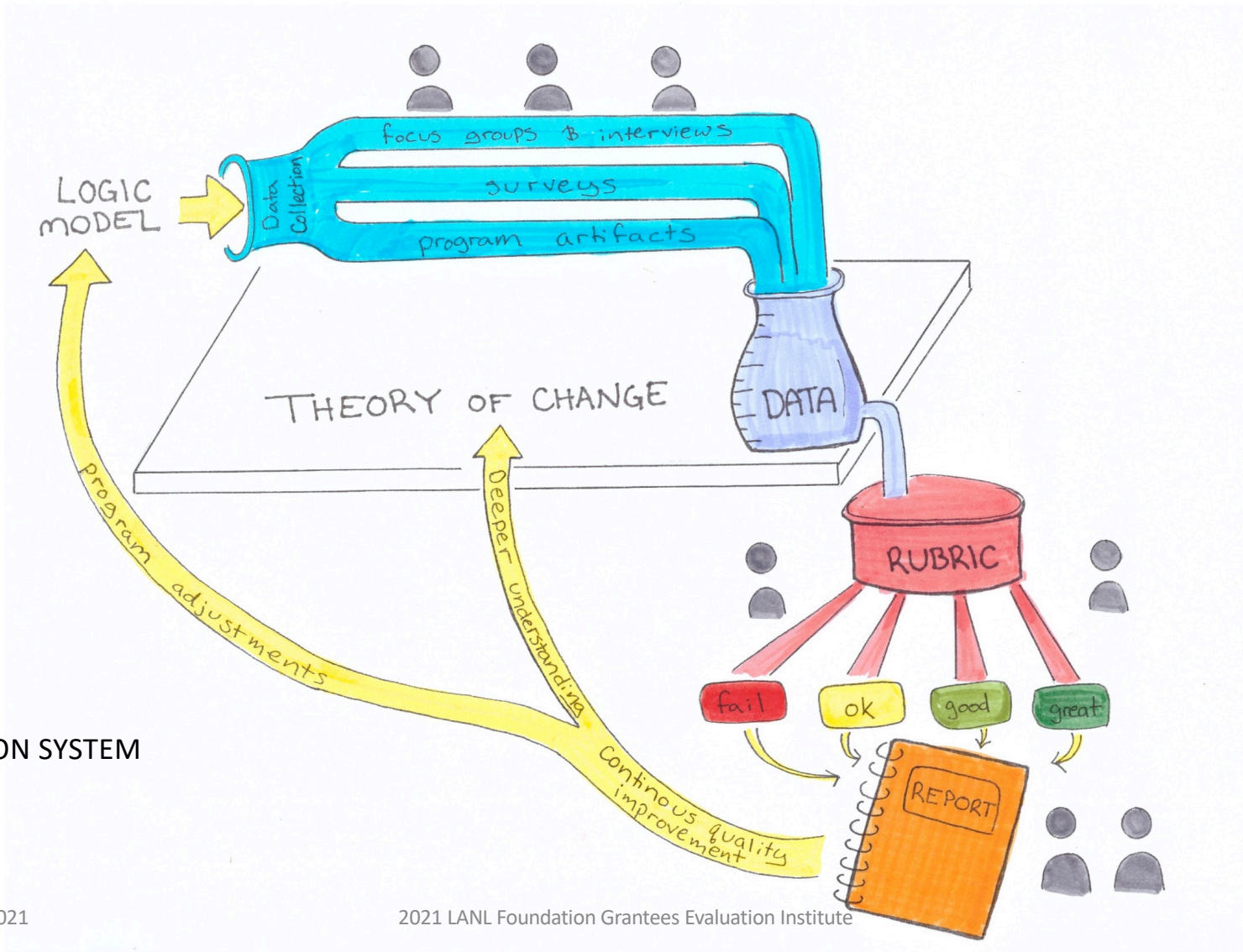


Embedding
Evaluation

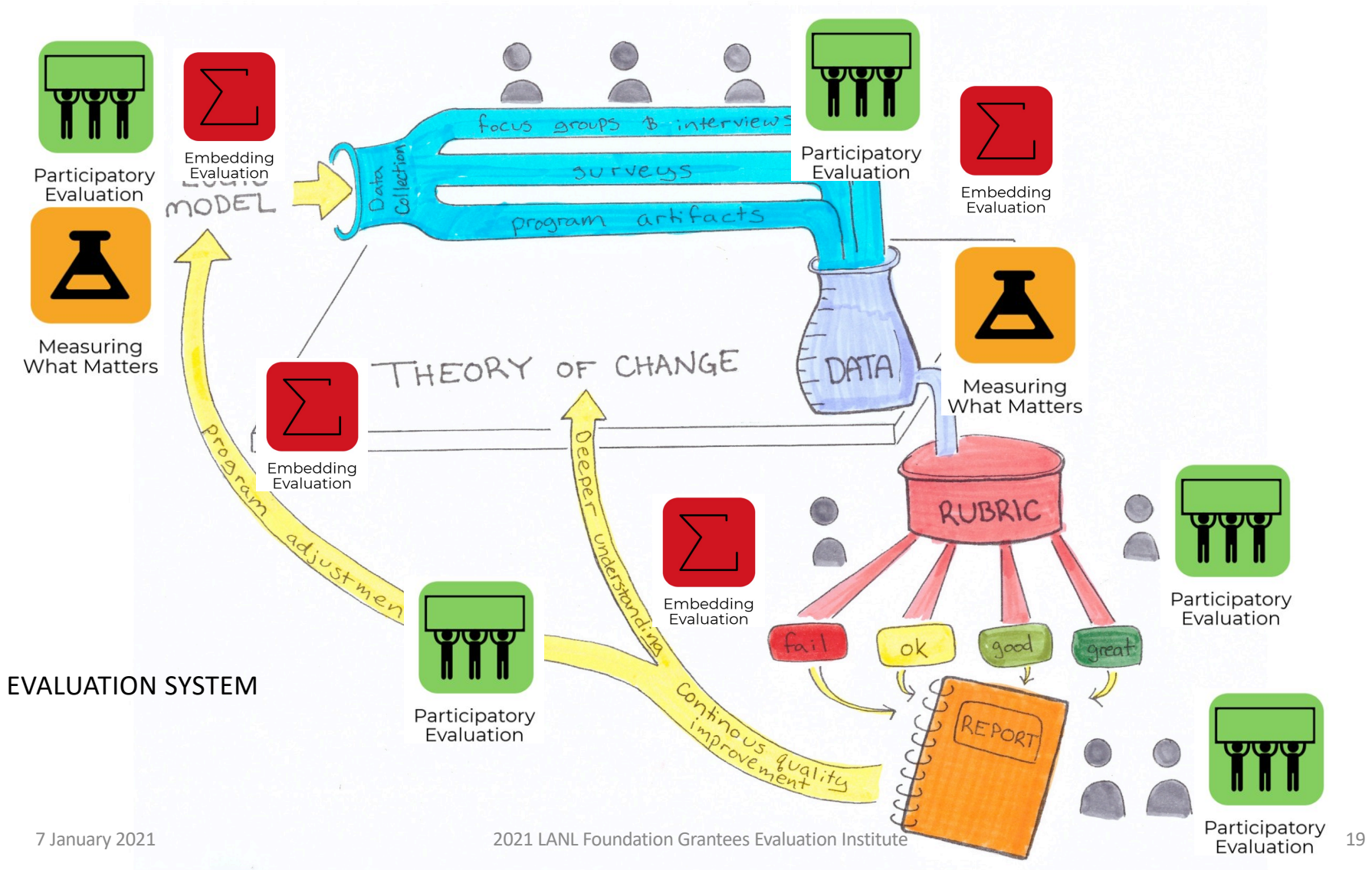


Participatory
Evaluation

- measuring what matters
and everything can be measured
- embedded evaluation
evaluation is part of the daily routine, and is used to achieve organization's mission
- participatory evaluation
evaluation works best when lots of people representing lots of groups are involved: leadership, front-line staff, Board of Directors, participants (or former participants), community members



EVALUATION SYSTEM



Mission Time

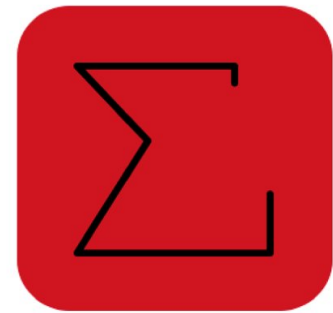
David Grant. 2015. *The Social Profit Handbook: The Essential Guide to Setting Goals, Assessing Outcomes, and Achieving Success for Mission-Driven Organizations*. White River Junction, VT: Chelsea Green Publishing.

Our story

Thinking about evaluation as mission time changed everything

Evaluation as mission time

- Moving reflection work from meetings imposed by your evaluator to time imposed by you
 - Agenda item for staff and board meetings
 - Internal evaluation coordinator / evaluation team
- Making time for evaluation means your organization will be moving in the right direction
- Plus mission time brings joy



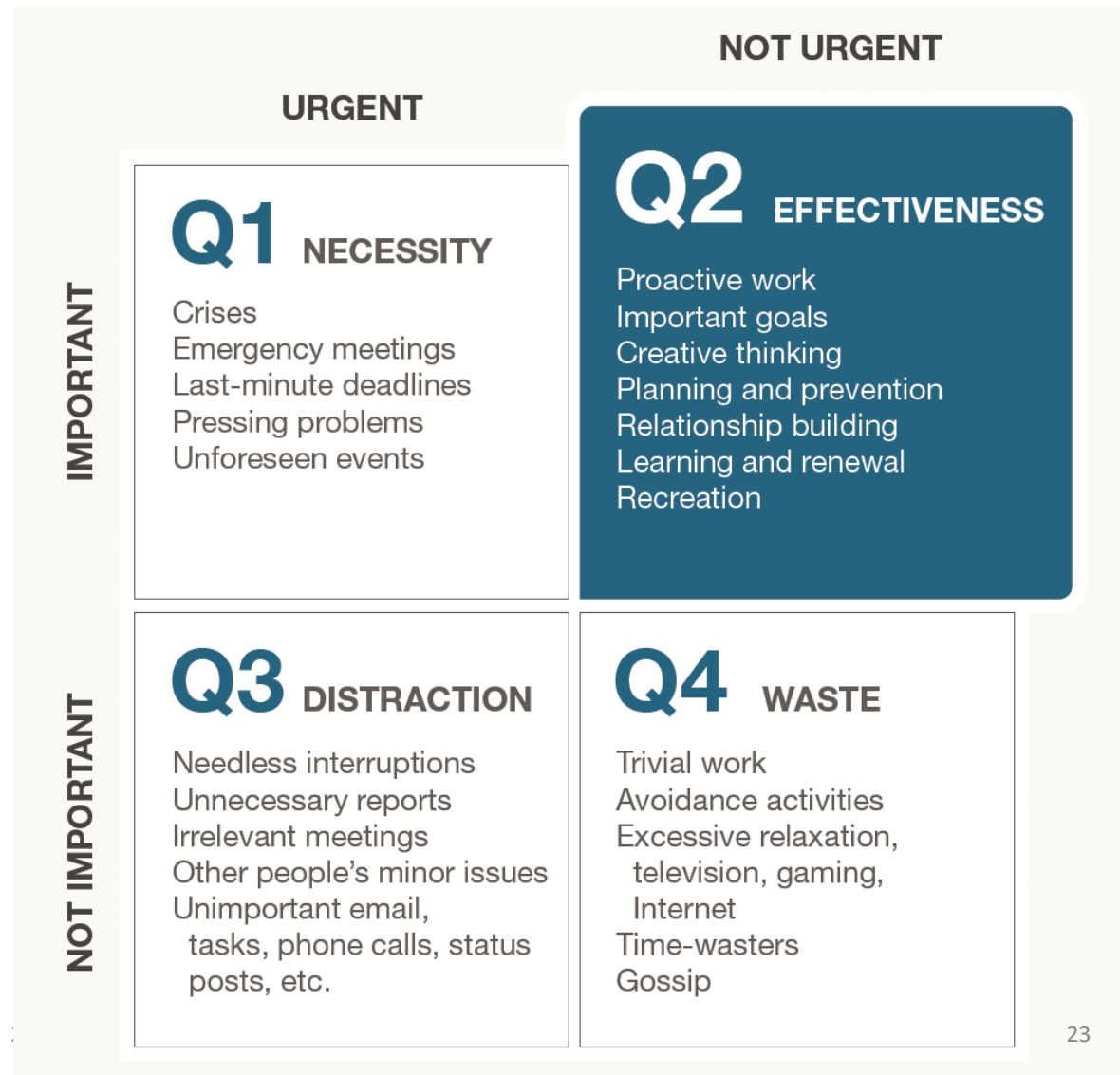
Embedding
Evaluation

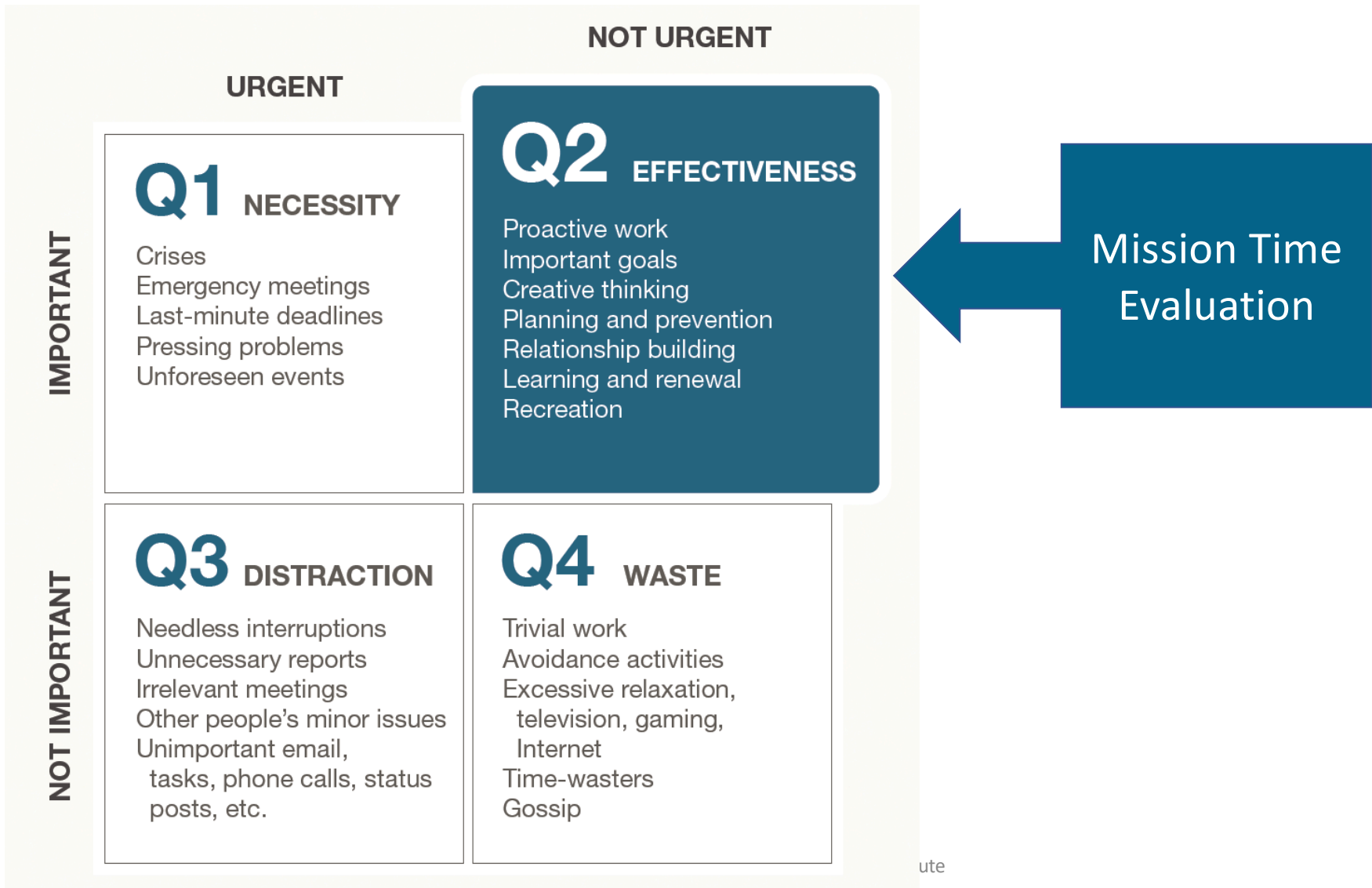
Covey Quadrants

Steven Covey
7 Habits of Highly Effective People
Habit 3: “Put First Things First.”

<https://www.franklincovey.com/the-7-habits/habit-3.html>

7 January 2021





The Evaluation Institute is Mission time

Big time

Jan 7 – Intro to Evaluation / Logic models

12:30-12:45pm Introduction: today's work, logistics (all)

12:45-1:00pm Getting acquainted: small groups & facilitators (groups)

1:00-1:15pm Evaluation principles, mission time (all)

1:15-1:25pm BREAK

1:25-1:55pm Logic models overview (all)

1:55-2:20pm Define outcomes (on your own)

2:20-2:30pm BREAK

2:30-3:00pm Share work (groups)

3:00-3:20pm Debrief outcomes (all)

3:20-3:30pm BREAK

3:30-4:10pm Define resources and activities (on your own)

4:10-4:50pm Share work (small groups with facilitator)

4:50pm Close

Blue = plenary

Purple = small groups

Green = take a break

Orange = work on your own