

WELCOME

LANL Foundation Grantees 2022 Evaluation Institute

UNM Evaluation Lab Team
January 13, 2022



Zoom hacks

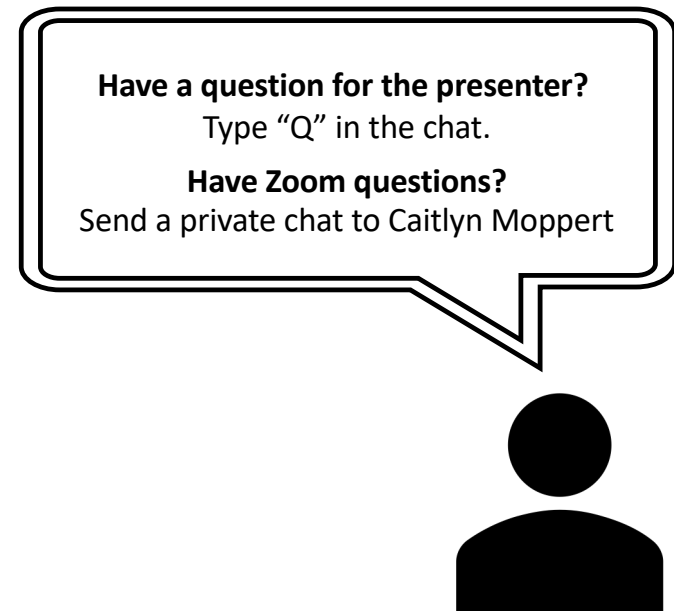
- Please rename yourself, adding your organization
- If you have a question, please type “Q” into the chat
 - We will call on you after each section
 - Please keep chat otherwise clear so we can keep track of questions
- Try speaker view – it makes Zoom less distracting

For help using Zoom



Caitlyn Moppert

Logistics



Welcome Organizations

Chama Valley Arts Foundation

Environmental Education of New Mexico

Española Public Schools - Healthcare Career
Pathways Project

Explora

LANL Math and Science Academy

New Mexico Immigrant Law Center

Pajarito Environmental Education Center

Peñasco ISD - Career Pathways

Pueblo of Tesuque

Questa Farmer's Market / Locality

Santa Fe Public Schools Language and Culture
Department

Santa Fe Public Schools - Native American Student
Services

Santa Fe Outdoor
Education Collaborative, Watershed Association

SEL4NM: Social-Emotional Learning

Teach for America

Youth Works, Inc

Facilitators



Camille
Velarde



Claudia
Diaz Fuentes



Melissa
Binder

Ranjana
Damle

ECHO Learning Community Director



Charla Orozco

Thank you, LANL Foundation!



2022 Evaluation Institute

Learning-by-doing

- Build an evaluation
- Institute exercises
- "Homework"

Small groups

- One-on-one feedback from Evaluation Lab facilitator
- Relationship building
- Peer learning

Resources

- Materials

<http://evallab.unm.edu/for-organizations/lanl-foundation-grantees.html>

Survey questions upfront

- Level: Too advanced, too basic, just right
- Amount of material: too much, too little, just right
- What worked?
- What should we do different next time?



<https://www.surveymonkey.com/r/7S963KW>

The Institute

Institute Sessions
2nd Thursdays, 1:00-3:00 PM

ECHO Learning Community
3rd Tuesdays, 9:00-10:30 AM

January 13 (1-5pm)	Institute orientation, Logic models		
February 10	Measuring what matters*	February 15	Theories of Change
March 10	Focusing the evaluation	March 15	Surveys
April 14	Data collection options	April 19	Interactive Focus Groups
May 12	Embedding	May 17	Community-Based Participatory Evaluation
June	1-on-1 Consultations	June 21	Coding
		July	BREAK
		August 16	Community Data
		September 20	Visualizing Data
October/November	Presentations/graduation	October 18	Excel: Pre-Post Reporting
Time and date TBA		November 15	Excel: Advanced Topic
*including the seemingly intangible		December	BREAK

Evaluation Lab ECHO Online Learning Community

3rd Tuesdays, 9-10:30am



*Everybody
learning,
everybody
teaching*

- You are all on the listserv
- Organizations share evaluation work in progress, get peer feedback
- Didactics on a variety of evaluation topics
- Sessions are recorded

<http://evallab.unm.edu/learning-center/evaluation-lab-project-echo-learning-community-.html>

Ongoing

Organization Mission Time:

- On your own time
- 1 ½ to 2 hours per month

Share evaluation work in ONE ECHO session

- Prep with Charla, who directs the ECHO Learning Community

Consult with facilitators in between sessions

Jan 13 – Institute Orientation + Logic models

1:00-1:15pm Introduction: today's work, logistics (all)

1:15-1:30pm Getting acquainted: small groups & facilitators (groups)

1:30-1:45pm Evaluation principles, mission time (all)

1:45-2:00pm BREAK

2:00-2:30pm Logic models overview (all)

2:30-2:55pm Define outcomes (on your own)

2:55-3:05pm BREAK

3:05-3:35pm Share work (groups)

3:35-4:00pm Define activities & outputs

4:00-4:10pm BREAK

4:10-4:40pm Share work (small groups with facilitator)

4:40-5:00pm Debrief & Survey (all)

Small Groups /
Breakout Rooms

Blue = plenary

Purple = small groups

Green = take a break

Orange = work on your own

Questions?

1:15-1:30pm

Getting acquainted: small groups & facilitators (groups)

Icebreaker:

What is something you learned about yourself during the pandemic?

1:30-1:45pm

Evaluation principles and mission time



UNM Evaluation Lab

building evaluation capacity that is rooted in the needs of New Mexico's communities.

- Evaluation Lab Fellowship: student training in partnership with community organizations
- Direct training and support for community organizations.



Evaluation Lab principles



Measuring
What Matters

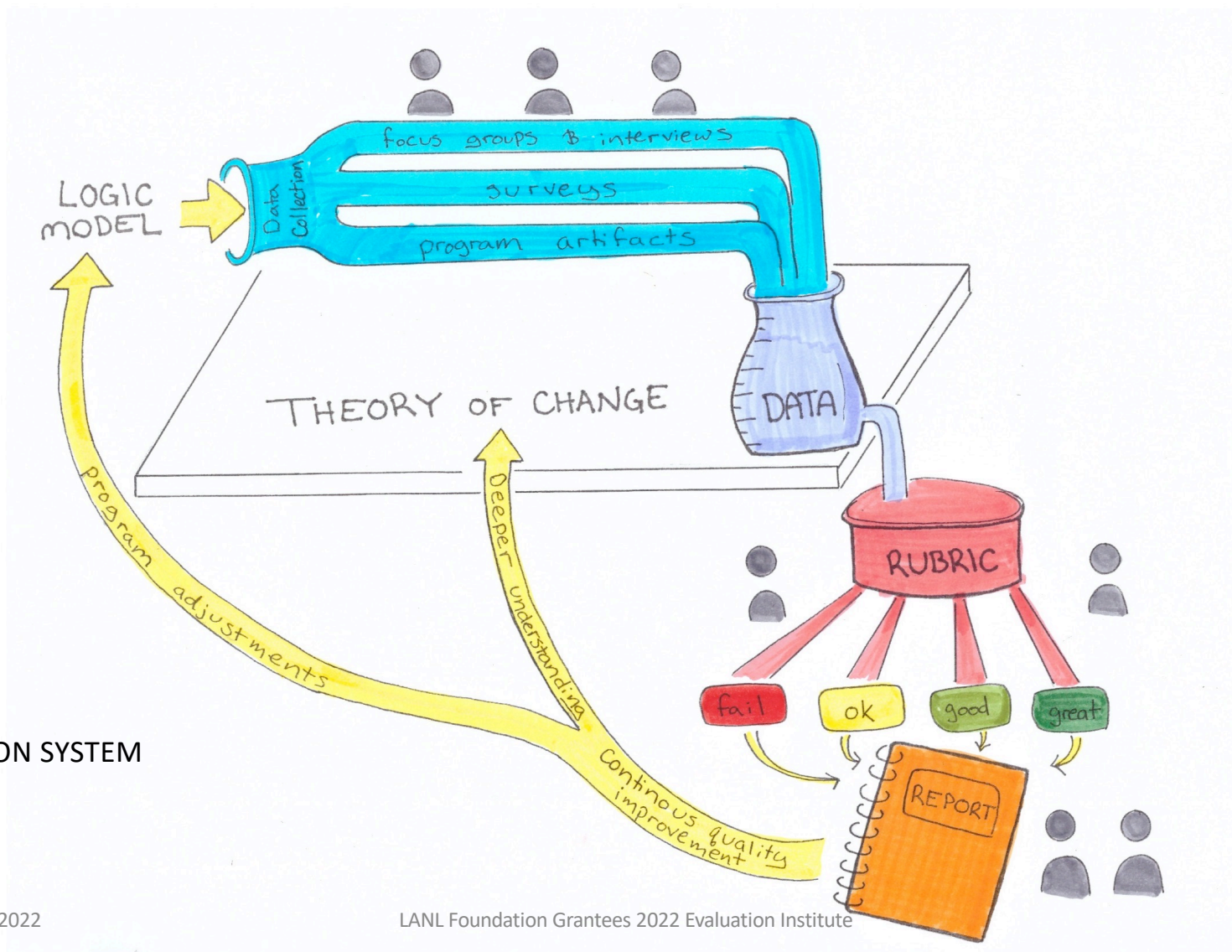


Embedding
Evaluation

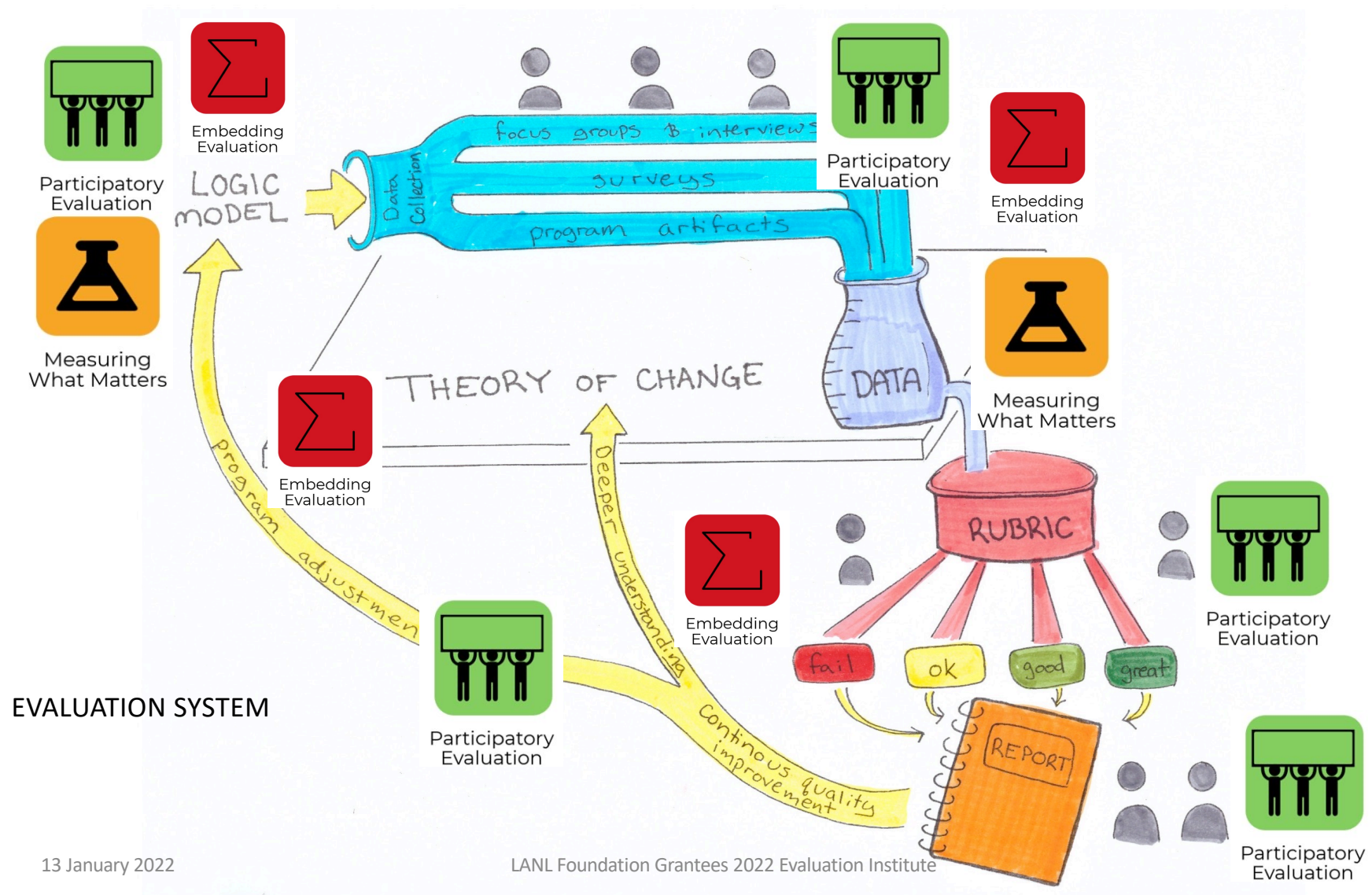


Participatory
Evaluation

- measuring what matters
and everything can be measured
- embedded evaluation
evaluation is part of the daily routine, and is used to achieve organization's mission
- participatory evaluation
evaluation works best when lots of people representing lots of groups are involved: leadership, front-line staff, Board of Directors, participants (or former participants), community members



EVALUATION SYSTEM



Mission Time

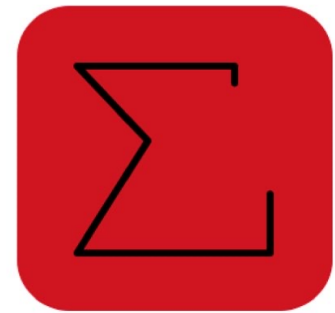
David Grant. 2015. *The Social Profit Handbook: The Essential Guide to Setting Goals, Assessing Outcomes, and Achieving Success for Mission-Driven Organizations*. White River Junction, VT: Chelsea Green Publishing.

Our story

Thinking about evaluation as mission time changed everything

Evaluation as mission time

- Moving reflection work from meetings imposed by your evaluator to time imposed by you
 - Agenda item for staff and board meetings
 - Internal evaluation coordinator / evaluation team
- Making time for evaluation means your organization will be moving in the right direction
- Plus mission time brings joy



Embedding
Evaluation

Covey Quadrants

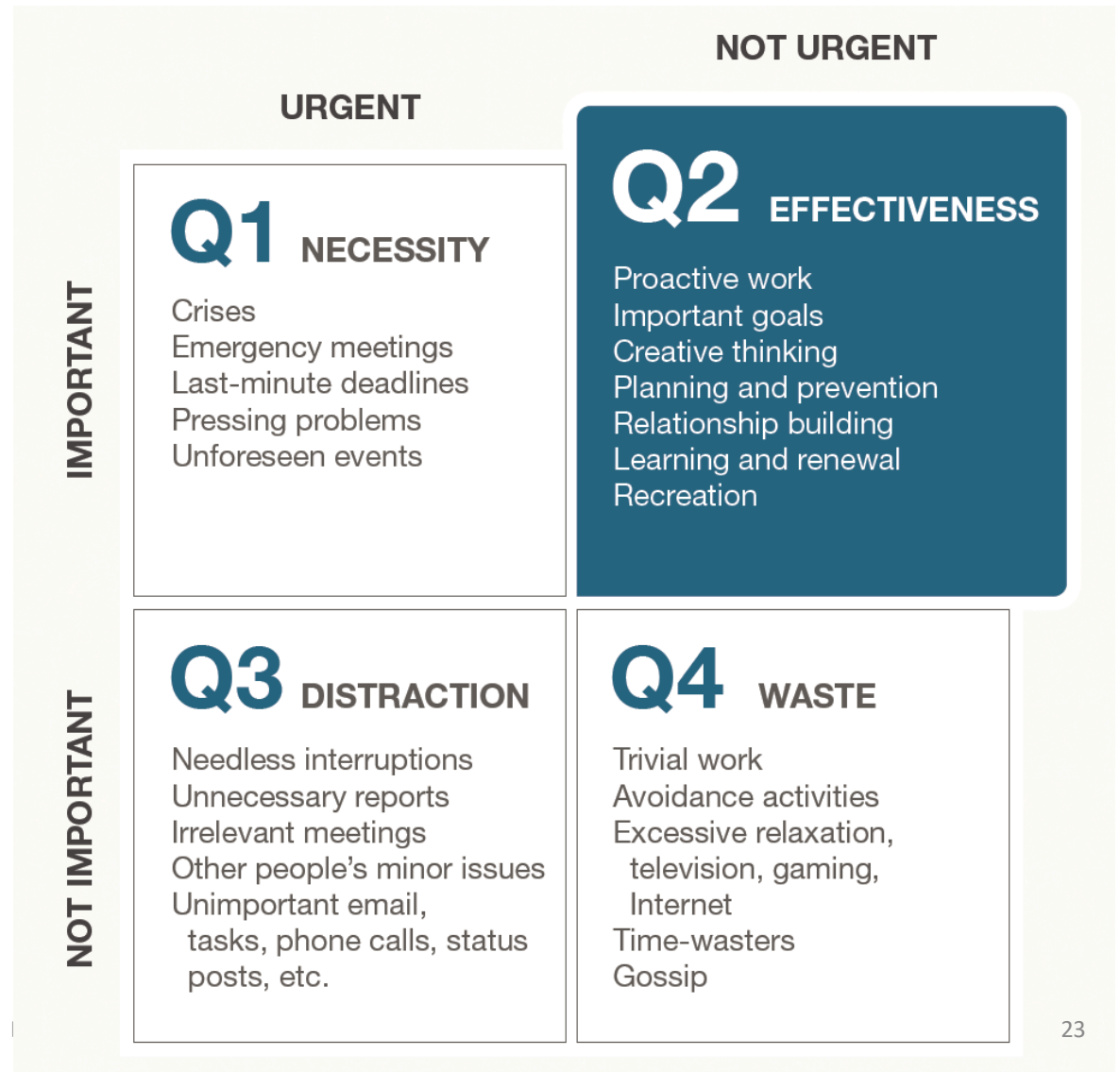
Steven Covey

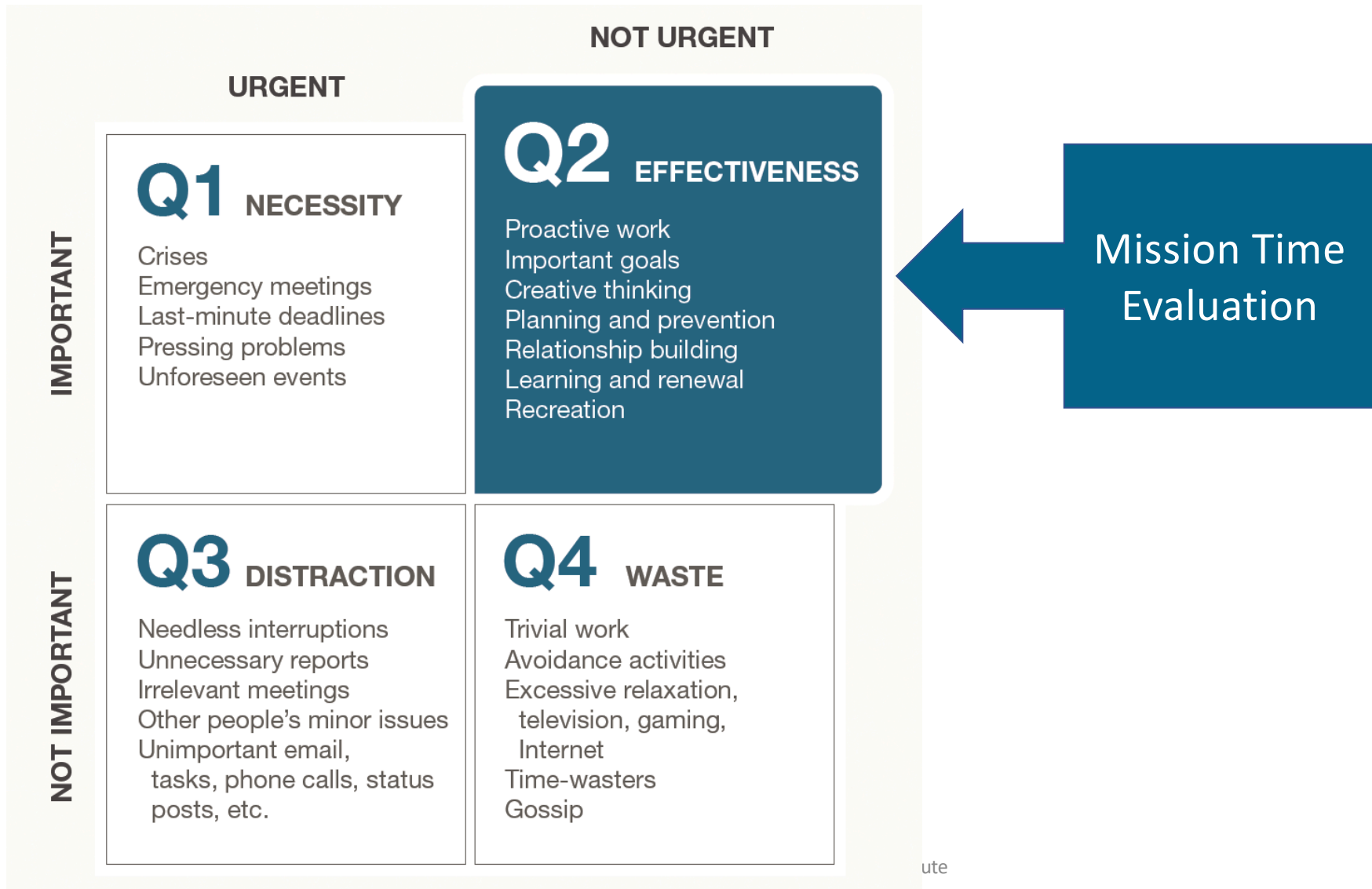
7 Habits of Highly Effective People

Habit 3: “Put First Things First.”

<https://www.franklincovey.com/the-7-habits/habit-3.html>

13 January 2022





The Evaluation Institute is serious
mission time

Commitment

Hours

- **Half day orientation and training** on January 13, 2022, 1-5pm

12

- **2-hour monthly trainings** on February 10, March 10, April 14, and May 12, 1-3 pm (2nd Thursday of the month)

14

- **Monthly ECHO Learning Community:** February 15, March 15, April 19, May 17, June 21 AND August 16, September 20, October 18, November 15, 9-10:30 am (3rd Tuesday of the month)

- **Mission Time** that you will set aside on your own time to prepare evaluation materials between trainings (1 ½ - 2 hours per month)

18 – 24

TOTAL TIME

44 – 50

Questions?

BREAK!

See you at 2:00 PM!